

19" HYPERline Series Free Standing Cabinets

**STANDARD****OPTIONAL**

Free Standing HYPERline Series Cabinets 16U/20U/22U/26U/32U/36U/42U/47U W600/800mm D600/800/1000/1200mm

Multi folded modular design clamped with screws, coated with RAL 9005 epoxy polyester powder.

The rack has a front glass door, with single point barrel locking and a metal rear door or a perforated front door. Also, removable and lockable side panels.

1 set of 19" front depth adjustable equipment mounting rails & 1 set of 19" rear fixed equipment mounting rails, U height numbered.

Removable cable entry panels connected with micro joints are located at the bottom side. PVC and brushed cable entrances are located at the top side. The accessory sliding cable entry can be inserted at the bottom side during the field applications.

Ventilation slots that can mount single or double fan modules for forced ventilation.

Front door with 4,0 mm dark coloured and EN 12150-1 compatible tempered secure glass with metal housing.

Maximum load capacity up to 600kg.

4 adjustable feet group included, replaceable by a castor set (optional)

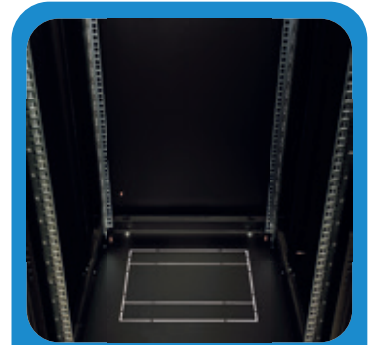
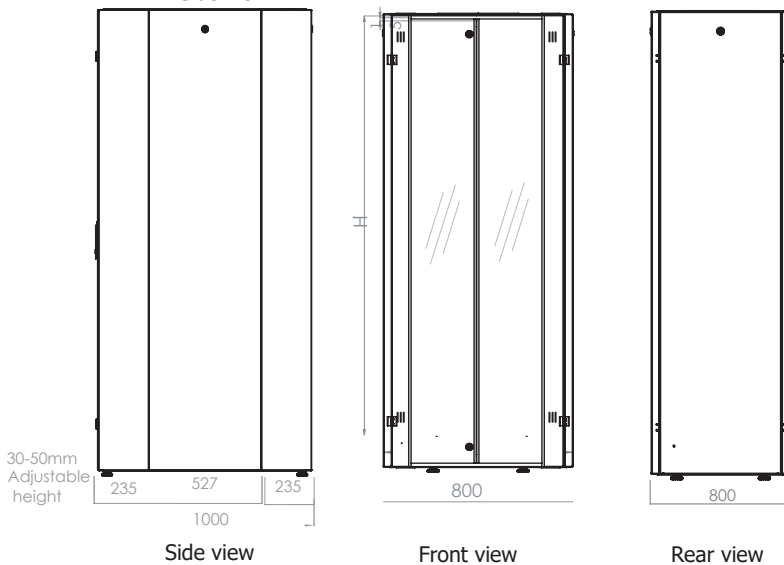
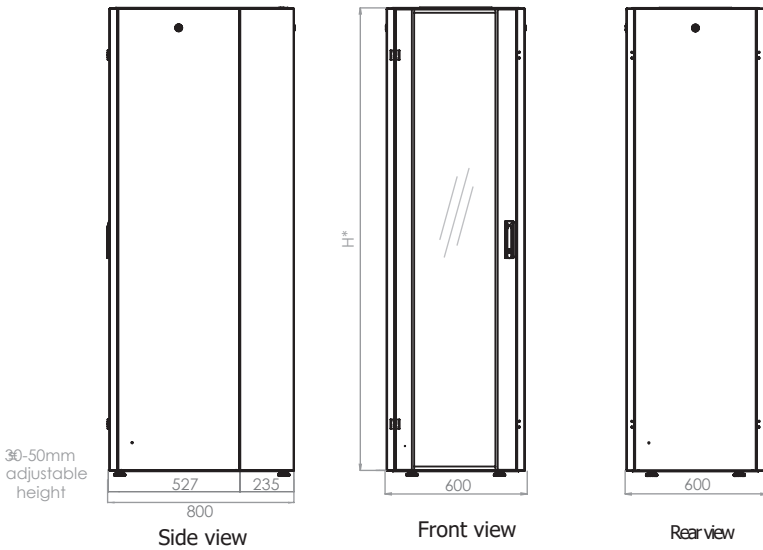
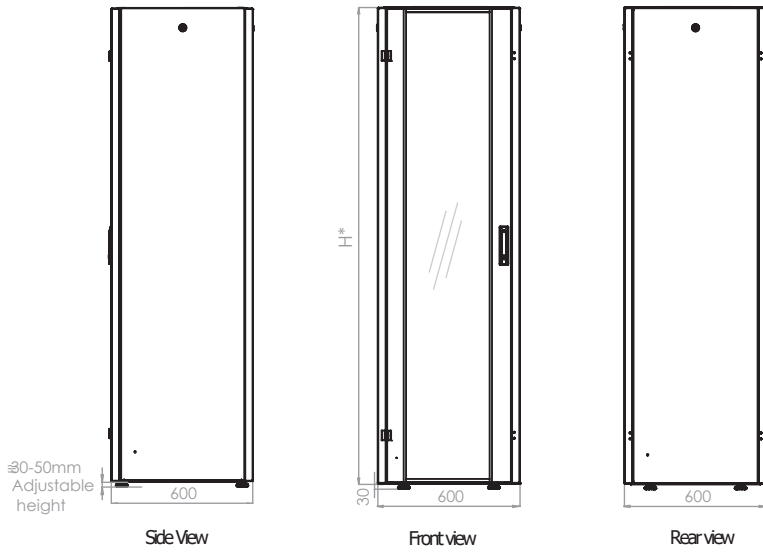
Production Standards :

- ISO 9001:2015 - Quality Management System
- ISO 14001:2015 - Environmental Management System

Compliance:

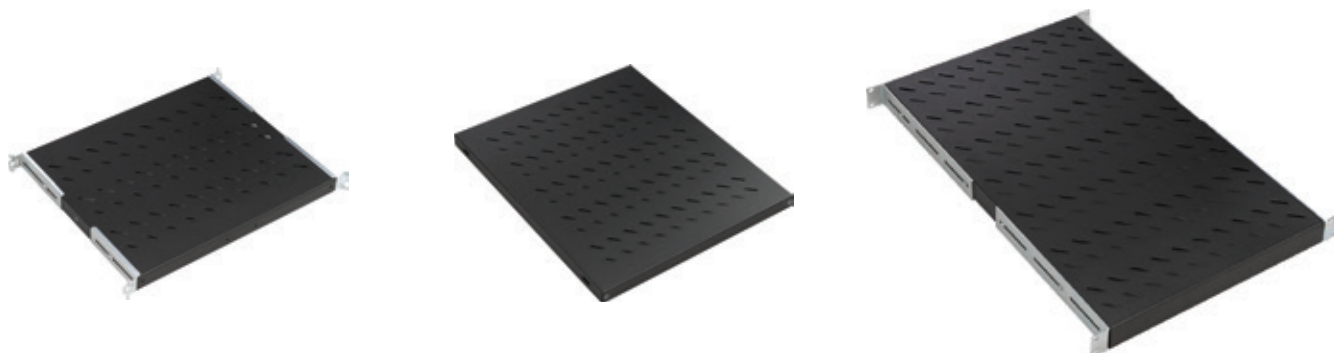
- EN 61587-1 Mechanical structures for electronic equipment - Tests for IEC 60917 and IEC 60297 series
- Climatic and Environment: EN 61587-1/4.2, IEC60068-2-1, IEC60068-2-2, IEC60068-2-30
- Static Mechanical Load Lifting: EN 61587-1/5.2.1
- Static Mechanical Load Stiffness: EN 61587-1/5.2.2
- Dynamic Mechanical Load Vibration and Shock, Impact: EN61587-1/5.3.1, EN61587-1/5.3.3, IEC60068-2-6, IEC60068-2-27
- Earth Bond: EN61587-1/6.2
- Flammability: EN 61587-1/6.3
- Degrees of Protection Provided by Enclosures (Ip Code): IP20
- EN 13501-1+ A1- Epoxy Powder coated compliant to Fire classification of construction products and building elements -Part 1: Classification using data from reaction to fire tests
- Epoxy Powder coating tested as per EN ISO 9227 and ASTM B 117 Corrosion tests in artificial atmospheres - Salt spray tests; minimum 1000 hours
- EN ISO 2409 Paints and varnishes - Cross-cut test
- EN ISO 2178 Non-magnetic coatings on magnetic substrates -
- Measurement of coating thickness - Magnetic method
- RoHS Compliancy according to 2011/65/EU
- CE Compliant to EN 60950-1

19" HYPERline Series Free Standing Cabinets



* H length can be checked from the product dimensions.

19" HYPERline Series Free Standing Cabinets Accessories



Frequently Used Accessories
19" HYPERline Series Free Standing Cabinet Dimensions (W:Width mm D:Depth mm)

	W:600 x D:600	W:600 x D:800	W:600 x D:1000	W:800 x D:600	W:800 x D:800	W:800 x D:1000
Fixed Shelves Compatible with Lande Cabinets	LN-RAF-SBT-D600-CC	LN-RAF-SBT-D800-CC	LN-RAF-SBT-D100-CC	LN-RAF-SBT-D600-CC	LN-RAF-SBT-D800-CC	LN-RAF-SBT-D100-CC
Universal Fixed Compatible with All Cabinets	LN-RAF-SBT-D600-CC-UNV	LN-RAF-SBT-D800-CC-UNV	LN-RAF-SBT-D100-CC-UNV	LN-RAF-SBT-D600-CC-UNV	LN-RAF-SBT-D800-CC-UNV	LN-RAF-SBT-D100-CC-UNV
Heavy Duty Type Shelves	-	-	LN-RAF-SBA-D100-CC	-	-	LN-RAF-SBA-D100-CC

**CC= Color codification- Replace CC with BL for Black RAL 9005 Color- and Replace CC with LC for Light Grey RAL 7035 Color.



Frequently Used Accessories
19" HYPERline Series Free Standing Cabinet Dimensions (W:Width mm D:Depth mm)

	W:600 x D:600	W:600 x D:800	W:600 x D:1000	W:800 x D:800	W:800 x D:1000
Sliding Shelves	LN-RAF-HRK-D600-BL	LN-RAF-HRK-D800-BL	-	LN-RAF-HRK-D800-BL	-
Heavy Duty Type Sliding Shelves	-	-	LN-RAF-HRA-D100-BL	-	LN-RAF-HRA-D100-BL



Frequently Used Accessories
19" HYPERline Series Free Standing Cabinet Dimensions (W:Width mm D:Depth mm)

	W:600 x D:600	W:600 x D:800	W:600 x D:1000	W:800 x D:800	W:800 x D:1000
2 Fan Module On/Off Switched	LN-FAN-ONF-2FFS-BL	LN-FAN-ONF-2FFS-BL	LN-FAN-ONF-2FFS-BL	LN-FAN-ONF-2FFS-BL	LN-FAN-ONF-2FFS-BL
2 Fan Module Thermostat Switched	LN-FAN-THM-2FFS-BL	LN-FAN-THM-2FFS-BL	LN-FAN-THM-2FFS-BL	LN-FAN-THM-2FFS-BL	LN-FAN-THM-2FFS-BL
4 Fan Module On/Off Switched	LN-FAN-ONF-4FFS-BL	LN-FAN-ONF-4FFS-BL	LN-FAN-ONF-4FFS-BL	LN-FAN-ONF-4FFS-BL	LN-FAN-ONF-4FFS-BL
4 Fan Module Thermostat Switched	LN-FAN-THM-4FFS-BL	LN-FAN-THM-4FFS-BL	LN-FAN-THM-4FFS-BL	LN-FAN-THM-4FFS-BL	LN-FAN-THM-4FFS-BL
Horizontal Cable Management Panel 19" 1U 5 rings	LN-KDG-YKD-1UKN-BL	LN-KDG-YKD-1UKN-BL	LN-KDG-YKD-1UKN-BL	LN-KDG-YKD-1UKN-BL	LN-KDG-YKD-1UKN-BL

ACCESSORIES



Frequently Used Accessories 19" HYPERline Series Free Standing Cabinet Dimensions (W:Width mm D:Depth mm)

	W:600 x D:600	W:600 x D:800	W:600 x D:1000	W:800 x D:800	W:800 x D:1000
Vertical Cable Manager	-	-	-	LN-KDG-ORG-xxEU-BL	LN-KDG-ORG-xxEU-BL

**XX is the U height of Vertical cable manager, according to selected height of cabinet, please define U height while creating order.



Frequently Used Accessories 19" HYPERline Series Free Standing Cabinet Dimensions (W:Width mm D:Depth mm)

	W:600 x D:600	W:600 x D:800	W:600 x D:1000	W:800 x D:600	W:800 x D:800	W:800 x D:1000
Caster Group; 2 with brakes, 2 without brakes	LN-ZMN-TKR-5525-XX	LN-ZMN-TKR-5525-XX	LN-ZMN-TKR-5525-XX	LN-ZMN-TKR-5525-XX	LN-ZMN-TKR-5525-XX	LN-ZMN-TKR-5525-XX



Frequently Used Accessories 19" HYPERline Series Free Standing Cabinet Dimensions (W:Width mm D:Depth mm)

	W:600 x D:600	W:600 x D:800	W:600 x D:1000	W:800 x D:600	W:800 x D:800	W:800 x D:1000
PDU 6 Way Schuko Type, 16A Fused	LN-PRZ-SGT-1U6P-SC	LN-PRZ-SGT-1U6P-SC	LN-PRZ-SGT-1U6P-SC	LN-PRZ-SGT-1U6P-SC	LN-PRZ-SGT-1U6P-SC	LN-PRZ-SGT-1U6P-SC



Frequently Used Accessories 19" HYPERline Series Free Standing Cabinet Dimensions (W:Width mm D:Depth mm)

	W:600 x D:600	W:600 x D:800	W:600 x D:1000	W:800 x D:600	W:800 x D:800	W:800 x D:1000
Mounting Hardware, Fizing M6 Cage Nut Set of 20	LN-DGR-KFS-M620-XX	LN-DGR-KFS-M620-XX	LN-DGR-KFS-M620-XX	LN-DGR-KFS-M620-XX	LN-DGR-KFS-M620-XX	LN-DGR-KFS-M620-XX